

Introduction to Shading Art Bundle

What's Included?

Teacher's Instructions

15 Practice Worksheets

19 Reference Images

2 Google Slides Version
of the Worksheets

6 Lesson Handouts

12 Video
Demonstrations

2 Lesson Slideshows

Rubric



What's Included in the Download?

Inside Out
ART TEACHER

Introduction to Shading Art Bundle

Inside Out ART TEACHER Shading Worksheets

Teacher Instructions

Thank you so much for purchasing this lesson. Included are two different versions of these shading worksheets. You will find the PDFs in the download folder and here is the [LINK TO THE GOOGLE SLIDES VERSION](#).

Both can either be printed or shared digitally with your students. There are videos attached to each worksheet explaining how to complete the lesson. Links can be clicked digitally or students may scan the QR codes to see tips and pointers for completing the exercises.

As always if you have any questions please email me at insideoutartteacher@gmail.com

Don't forget you can earn credits towards future purchases by leaving great feedback on this product.

[Leave your review HERE](#)

If you like this lesson, you can find more worksheets, presentations, and bundles in my [IPT Shop](#). Here are some of my favorites. Click the image to learn more.

[X-Grid Drawing Worksheets](#) [12 Bellini Sketches](#) [Mystery Grid Drawing Worksheets](#) [Worksheet Bundles](#)

Inside Out ART TEACHER Shading Worksheets

Teacher Instructions

Thank you so much for purchasing this lesson. Included are two different versions of these shading worksheets. You will find the PDFs in the download folder and here is the [LINK TO THE GOOGLE SLIDES VERSION](#).

Both can either be printed or shared digitally with your students. There are videos attached to each worksheet explaining how to complete the lesson. Links can be clicked digitally or students may scan the QR codes to see tips and pointers for completing the exercises.

As always if you have any questions please email me at insideoutartteacher@gmail.com

Don't forget you can earn credits towards future purchases by leaving great feedback on this product.

[Leave your review HERE](#)

If you like this lesson, you can find more worksheets, presentations, and bundles in my [IPT Shop](#). Here are some of my favorites. Click the image to learn more.

[X-Grid Drawing Worksheets](#) [12 Bellini Sketches](#) [Mystery Grid Drawing Worksheets](#) [Worksheet Bundles](#)

Reverse Value Drawing

When shading on black paper you are capturing your highlights instead of your darks. You draw the light areas.

It takes time and patience to learn any shading technique. Do not get discouraged when it isn't perfect from the start! If you follow the tips in the box to the left after a few layers it will come together slowly. Don't be too hard on yourself and assume you can't do it when it isn't perfect immediately.

1. On your black paper first practice rendering lights by filling in your value scale.

2. Next, lightly sketch the cube in the box using pencil and then slowly begin to build up your highlights with the white charcoal or colored pencil.

What is darker the edge or the background?

Do not Press hard. A man's light are to build enter lights.

VALUE COMPOSITION and OVERLAPPING

Shading is a slow process and your drawing will evolve in **LAYERS**. It begins with learning how to look and **SEE** the form you are shading then using good technique to shade. Look at the pyramid shape below and notice how the values fade and define the edges.

Creating smooth transitions of value is an important drawing skill that takes practice and patience.

TIPS

1. LOOK at your reference photo often.
2. Do not press hard.
3. Build value slowly in **LAYERS**.
4. Do not smudge to cut corners.

VALUE

Value is the lightness or darkness of a color. Shading is used to depict value and create depth and dimension in art. Learning proper shading technique is an important skill that takes practice. **If you follow these tips you will be creating beautiful drawings with depth and dimension in no time.**

Use short strokes and a circular motion. Do not press hard. Build value in layers. Have patience and work slowly. Do not smudge. No outlines, use shading to show edges.

It takes time and patience to layer value properly. Beginners always try to rush and expect immediate results. Shading is a slow process and your drawing will evolve in layers. It doesn't look perfect from the start. Do not smudge to cut corners. This is a slow process and your drawing will evolve in layers. It doesn't look perfect from the start. Do not smudge to cut corners.

Reverse Value Drawing

When shading on black paper you are capturing your highlights instead of your darks. You draw the light areas.

It takes time and patience to learn any shading technique. Do not get discouraged when it isn't perfect from the start! If you follow the tips in the box to the left after a few layers it will come together slowly. Don't be too hard on yourself and assume you can't do it when it isn't perfect immediately.

1. On your black paper first practice rendering lights by filling in your value scale.

2. Next, lightly sketch the cube in the box using pencil and then slowly begin to build up your highlights with the white charcoal or colored pencil.

What is darker the edge or the background?

Do not Press hard. A man's light are to build enter lights.

VALUE COMPOSITION and OVERLAPPING

Shading is a slow process and your drawing will evolve in **LAYERS**. It begins with learning how to look and **SEE** the form you are shading then using good technique to shade. Look at the pyramid shape below and notice how the values fade and define the edges.

Creating smooth transitions of value is an important drawing skill that takes practice and patience.

TIPS

1. LOOK at your reference photo often.
2. Do not press hard.
3. Build value slowly in **LAYERS**.
4. Do not smudge to cut corners.

VALUE

Value is the lightness or darkness of a color. Shading is used to depict value and create depth and dimension in art. Learning proper shading technique is an important skill that takes practice. **If you follow these tips you will be creating beautiful drawings with depth and dimension in no time.**

Use short strokes and a circular motion. Do not press hard. Build value in layers. Have patience and work slowly. Do not smudge. No outlines, use shading to show edges.

It takes time and patience to layer value properly. Beginners always try to rush and expect immediate results. Shading is a slow process and your drawing will evolve in layers. It doesn't look perfect from the start. Do not smudge to cut corners. This is a slow process and your drawing will evolve in layers. It doesn't look perfect from the start. Do not smudge to cut corners.

VALUE

In art, **VALUE** is the lightness or darkness of a color. It is used to create depth and dimension in a work of art.

Practice creating 7 different values completely filling in the circles above using your pencil. Do not use your fingers to smudge the graphite. Try to make your circles smooth with no sketchy lines by adjusting the amount of pressure you apply and adding layers of shading.

NO OUTLINES

Notice how these images appear three dimensional and do NOT HAVE OUTLINES around them. The edges are defined by shadow.

Black and White

Reflections and Refraction on Toned Paper

Student Examples

Do Not Mix Black & White Pencil

Video Demonstrations

[/youtu.be/SVnYScuQU](https://youtu.be/SVnYScuQU)

Teacher's Instructions

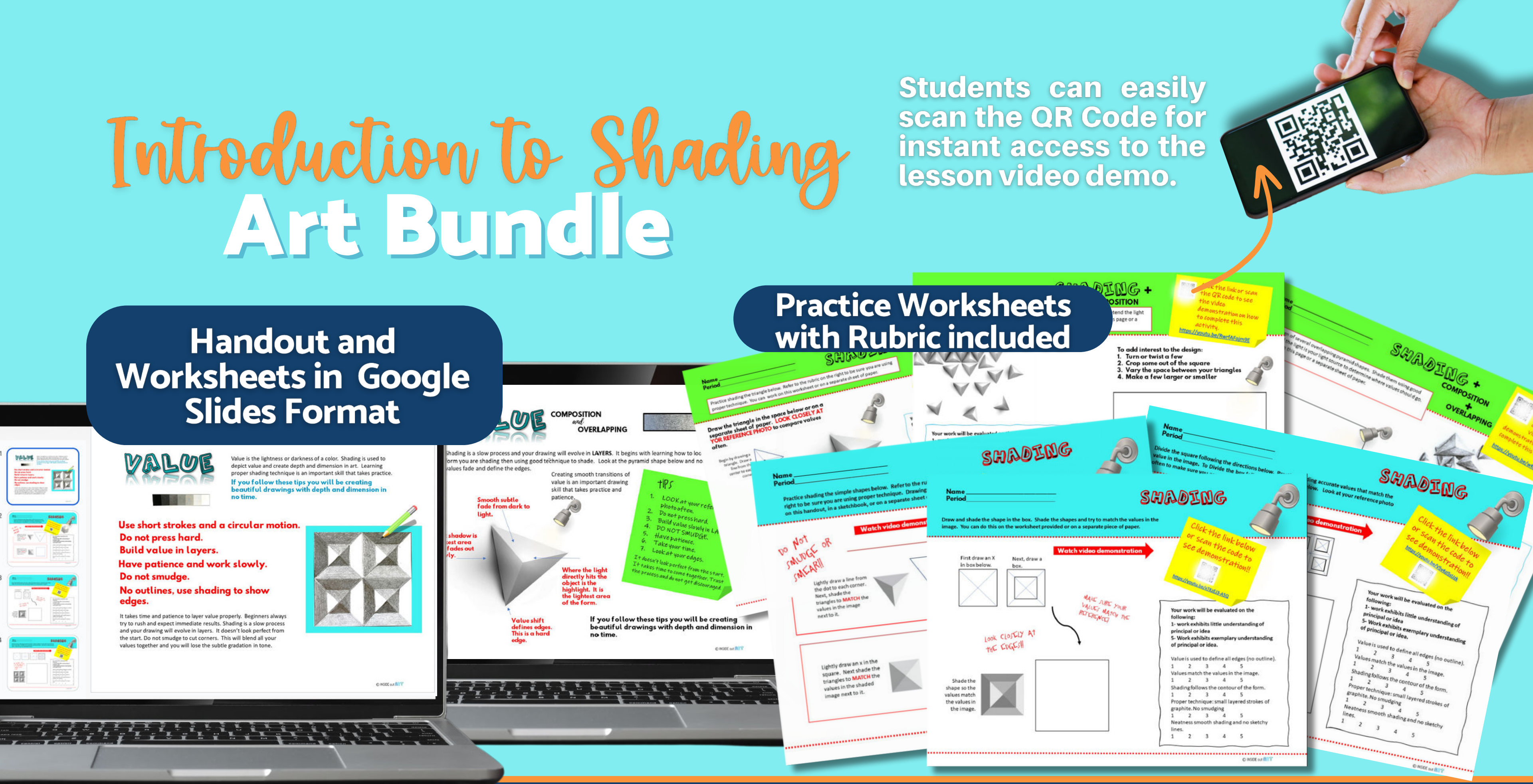
Lesson Handouts

Introduction to Shading Art Bundle

Students can easily scan the QR Code for instant access to the lesson video demo.

Handout and Worksheets in Google Slides Format

Practice Worksheets with Rubric included



Introduction to Shading Art Bundle

Rubric for Grading

Worksheets

Reference Photos with instructions have a
QR codes that links to the video
demonstrations

Introduction to Shading Art Bundle

Reference Images



Introduction to Shading Art Bundle

Video Demonstrations

18 Slides

18 Slides

High Contrast
Value Drawing
White Pencil on Black Paper

Positive and Negative Space
Drawing with Value.

Lesson Slideshows

What Educators Are Saying:



Extremely satisfied.

All Inside Out Art Teachers' lessons are perfect and easy to use, this one really got my students excited and working hard! Their final projects were really awesome. It was a great addition to my drawing unit - *Art Teacher, Shannon G.*



Extremely satisfied.

I lead students through these shading exercises, but offering the provided videos made it easier for students to revisit if they fell behind. This is a great way to teach students on how to shade without relying on outlines (something I continually have to remind students about). - *Art Teacher, Hannah S.*

Thank You!

I am Lauren and creating beautifully designed middle and high school art lessons and resources that save you time and allow you to spend more quality teaching moments with your students is my PASSION and my ART. I truly believe when we feel good on the inside we shine on the outside. I love being able to share my art with you.

